



JHR experimental capacity

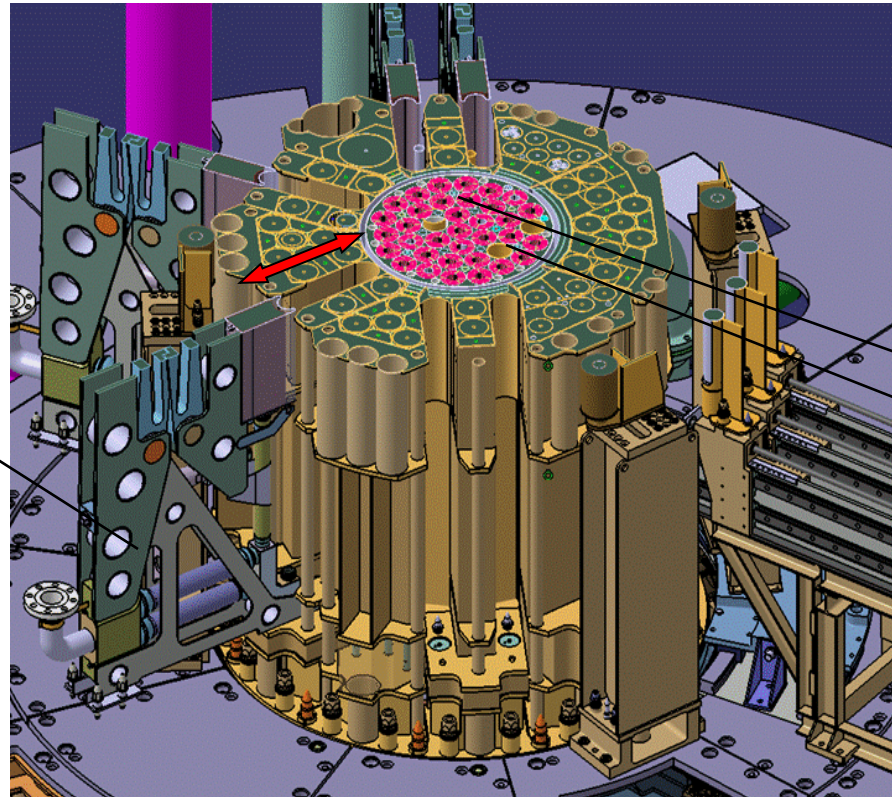
~20 simultaneous experiments

In reflector

Up to $5.5 \cdot 10^{14}$ n/cm².s
~20 fixed positions
and 6 displacement systems

Displacement systems:

- Adjust the power
- Study transients

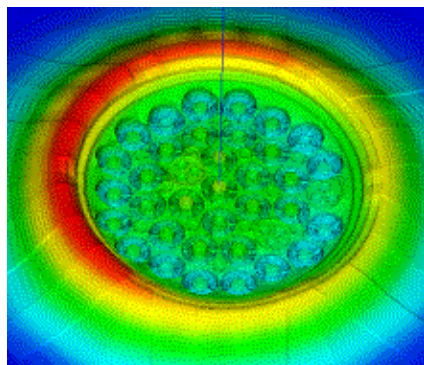


In core

Up to $5.5 \cdot 10^{14}$ n/cm².s, $E > 1$ MeV
Up to 10^{15} n/cm².s, $E > 0.1$ MeV

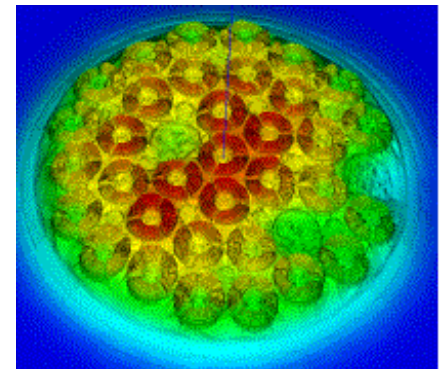
7 Small locations

3 large locations



Fuel experiment

Thermal neutron flux



Material ageing
(up to 16 dpa/y)

Fast neutron flux